



## **Sommet Africain du Pétrole et du Gaz**

Paris – Lundi 7 juin 2010

**Patrick DANIELOU**

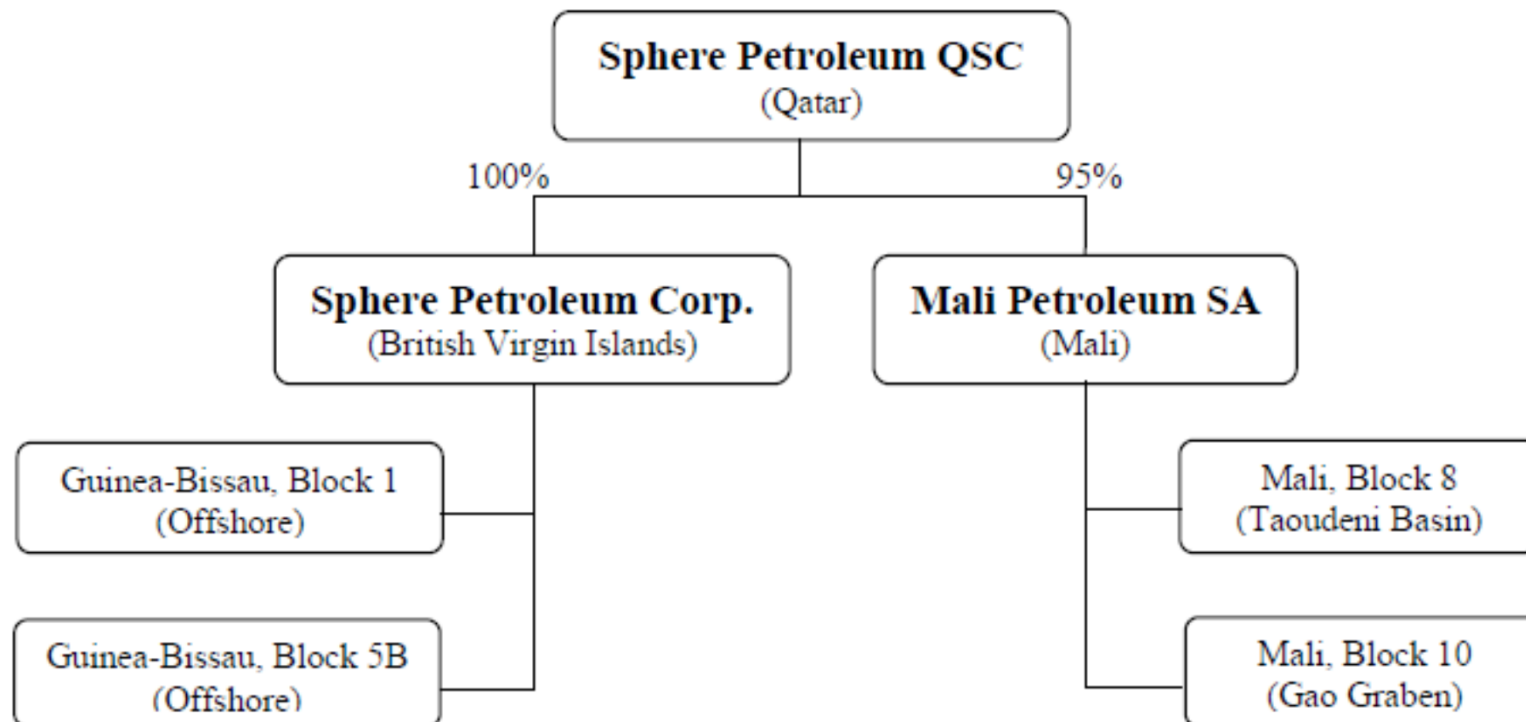
*Director and*

*Chief Finance & Administration Officer*



- Originally formed as a subsidiary of Sphere Investments Ltd., an Australian company quoted on the Australian Stock Exchange.
- In 2007, spun out and established in the State of Qatar.
- The head office of the Company is located in Doha, State of Qatar.
- Assets based in:
  - Guinea Bissau
    - Block 1 (Shallow Water)
    - Block 10 (Deep Water)
  - Mali
    - Block 8 (Taoudeni Basin)
    - Block 10 (Gao Graben)

**Corporate Structure of the Company**



**Republic of Guinea Bissau**







## Republic of Guinea Bissau

### **Block 1**

- Area of 4,800 km<sup>2</sup>
- Awarded to Sphere's 100% subsidiary Sphere Petroleum Corp. in April 2008 for a five year term, divided into three stages,
  - stage 1: 500 km of 2D seismic
  - stage 2: 250 km<sup>2</sup> of 3D seismic
  - Stage 3: drilling of a well.
- Option to extend the five year term: additional two wells
  
- Sphere is at present planning the acquisition of the 2D seismic program.
  
- The **principal reservoir objectives** in Block 1 occur within **Cretaceous sands** but **reservoir potential** could also exist within **Jurassic and early Cretaceous carbonates**.
  
- Sphere's interpretation of the existing seismic and well data has led to the identification of both structural and stratigraphic leads.



## Republic of Guinea Bissau

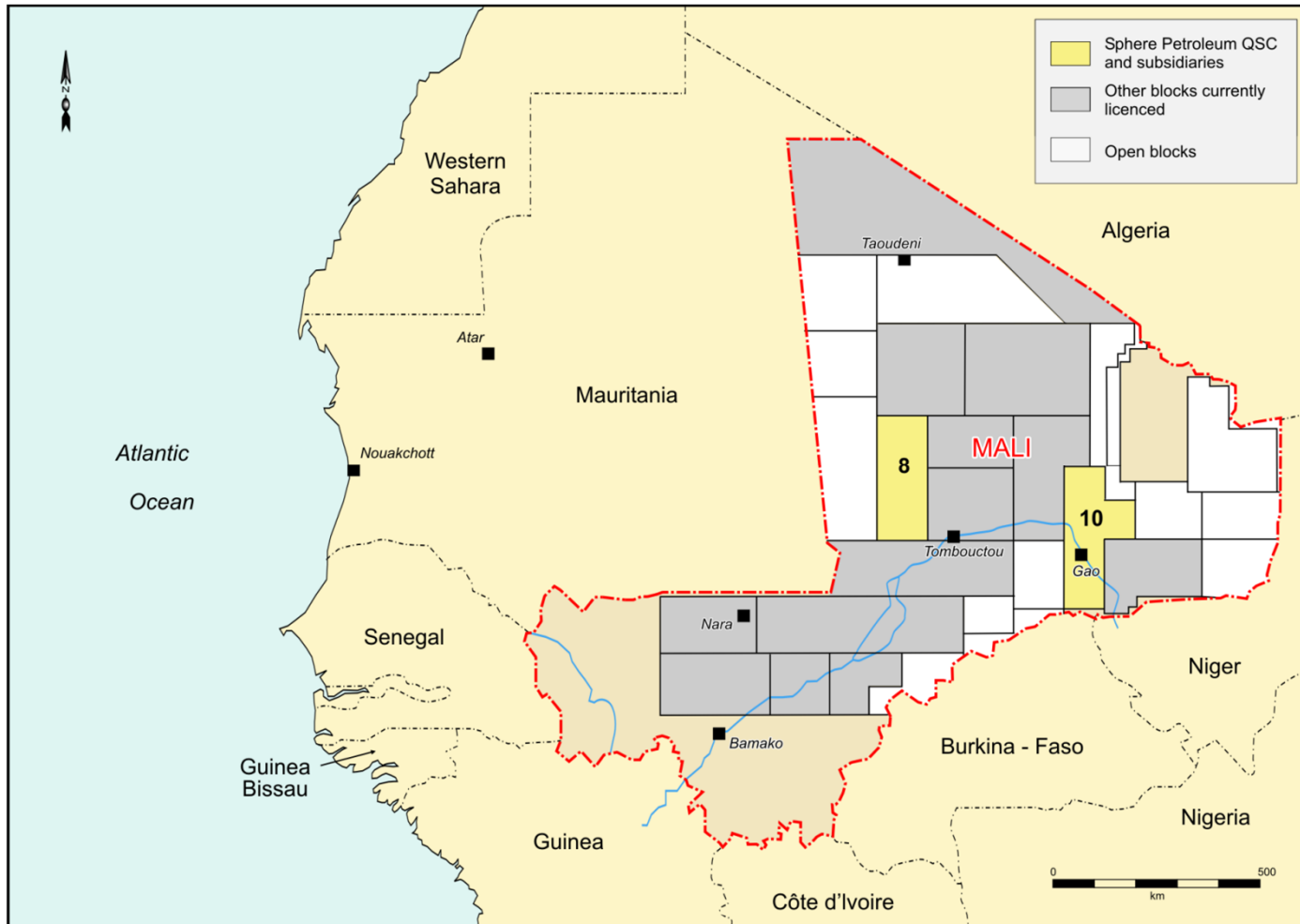
### **Block 5B**

- Area of 5,500 km<sup>2</sup>
- Awarded to Sphere's 100% subsidiary Sphere Petroleum Corp. in April 2008 for a five year term, divided into three stages,
  - stage 1: 500 km of 2D seismic
  - stage 2: 250 km<sup>2</sup> of 3D seismic
  - Stage 3: drilling of a well.
- Option to extend the five year term: additional two wells
  
- Sphere is at present planning the acquisition of the 2D seismic program.
  
- Block 5B is located in water depths ranging from 200 m to more than 4,000 m.
  
- Sphere's interpretation of the available data has revealed a variety of structural and stratigraphic traps. in both shallow and deep water
- Of particular interest are the rollovers which have been observed in association with faults and on top of horst blocks.

**Republic of Mali**



# Republic of Mali





## Republic of Mali

### **Block 8**

- Area of 35,112 km<sup>2</sup>
- Awarded to Sphere's 95% owned subsidiary Mali Petroleum SA in July 2005 for an initial four year term which was extend for 2 years,
- Located in the southeastern part of the Taoudeni Basin
  
- the Infracambrian sequences form the main exploration targets within the Block
- The **principal structural** targets comprise **two low relief anticlinal structures up to 60 km long** which Sphere has mapped in the northern part of the Block from reinterpretation of seismic from 1970's
  
- Sphere is at present planning to acquire 500 km 2D seismic to verify the extent of the anticlines which have been mapped



## Republic of Mali

### **Block 10**

- Area of 37,544 km<sup>2</sup>
- Awarded to Sphere's 95% owned subsidiary Mali Petroleum SA in July 2005 for an initial four year term which was extend for 2 years,
- Located in the northern Gao Graben, (productive Central African Rift System)
  
- The **principal reservoirs** are **sandstones of early Cretaceous age** and lacustrine shales of the same age are considered to be the main source rocks.
- A shallow water well located within the Graben encountered minor oil and gas shows,
- The reprocessing of early seismic has revealed the presence of flower structures as well as simple tensional fault systems
  
- Sphere is at present planning to acquire 700 km 2D seismic to verify the extent of the anticlines which have been mapped



Sphere is currently seeking for partners to participate to the acquisition of the 2D seismic program

**THANK YOU**